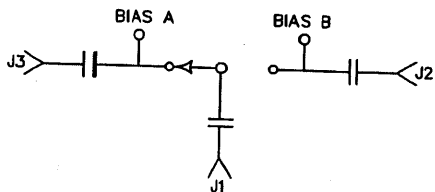


DESCRIPTION

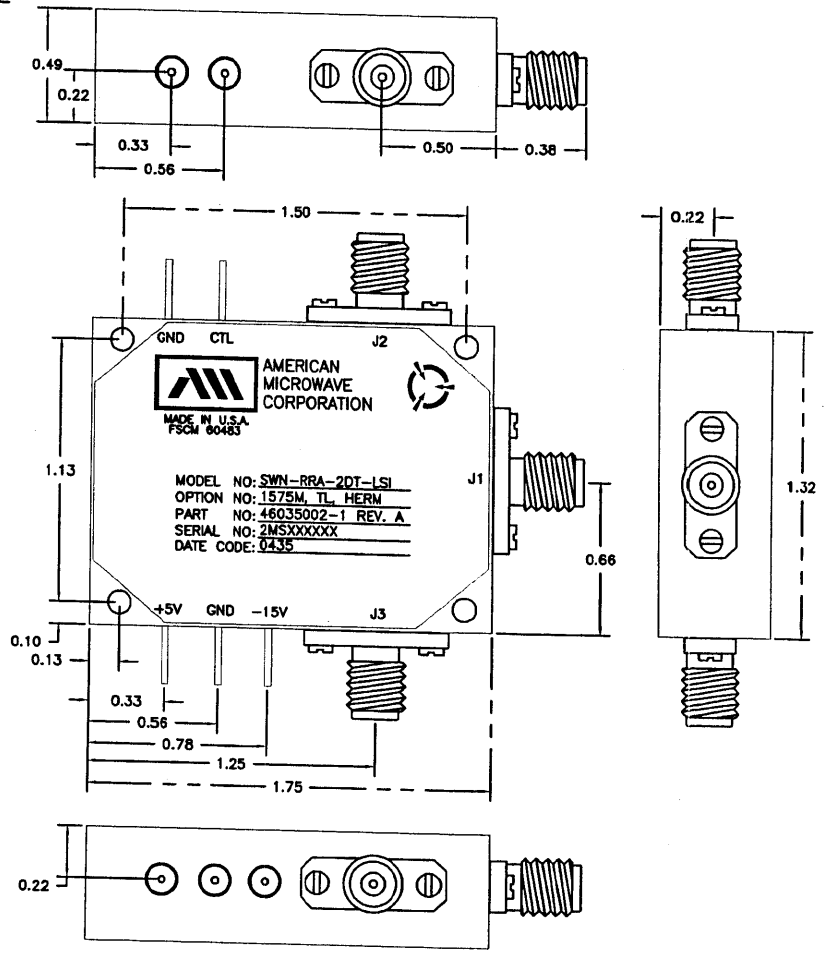
AMC MODEL SWN-FRA-2DT-LSI OPTION: 1575M, TL, HERM IS A HERMETICALLY SEALED, SINGLE POLE TWO THROW SWITCH DESIGNED TO OPERATE AT THE 1575.42 MHz FREQUENCY BAND WITH AN INSERTION LOSS OF < 2.0 dB AND AN ISOLATION OF > 40 dB. THE SIZE IS 1.75"(L) x 1.32"(W) x 0.49"(H).

SPECIFICATIONS

- FREQUENCY: 1575.42 MHz
- BANDWIDTH: 10 MHz MINIMUM; 3 dB
- SWITCHING SPEED: < 500 nSec
- ON TIME: < 2.5 TIMES THE SWITCHING SPEED
- INPUT VSWR: < 2.0:1 AT 1575 MHz
- OUTPUT VSWR: < 2.0:1 AT 1575 MHz
- INSERTION LOSS: < 2.0 dB
- ISOLATION: > 40 dB
- CONTROL: TTL: ACTIVE LOW
 LO=0 TO 0.8V @ 1.75 mA MAXIMUM SINK (J1-J2=ON)
 HI=2 TO 5V @ 50 μA MAXIMUM SOURCE (J1-J3=ON)
- POWER: +5V @ 100 mA
 -15V @ 100 mA
- SIZE: 1.75"(L) x 1.32"(W) x 0.49"(H)



REVISIONS				
ZONE	REV.	DESCRIPTION	DATE	APPROVED
	-	ORIGINAL RELEASE JOB# 407150E	8/26/04	EM



ENVIRONMENTAL RATINGS

- TEMPERATURE: -55°C TO +85°C (OPERATING)
 -65°C TO +125°C (STORAGE)
- HUMIDITY: MIL-STD-202F, METHOD 103B COND. B
- SHOCK: MIL-STD-202F, METHOD 213B COND. B
- VIBRATION: MIL-STD-202F, METHOD 204D COND. B
- ALTITUDE: MIL-STD-202F, METHOD 105C COND. B
- TEMPERATURE CYCLE: MIL-STD-202F, METHOD 107D COND. A

NOTE: SPECIFICATIONS WILL VARY OVER OPERATING TEMPERATURE
 NOTE: THE ABOVE SPECIFICATIONS ARE SUBJECT TO CHANGE OR REVISION

ALL DIMENSIONS ARE IN INCHES
 TOLERANCES:
 X.XX ±0.020
 X.XXX ±0.010

AMERICAN MICROWAVE CORPORATION

7311-G GROVE ROAD
 FREDERICK, MARYLAND 21704 USA
 TEL: 301-662-4700 FAX: 301-662-4938
 WEBSITE: www.americanmicrowavecorp.com
 E-MAIL: sales@americanmicrowavecorp.com
 ISO 9001:2000 CERTIFIED

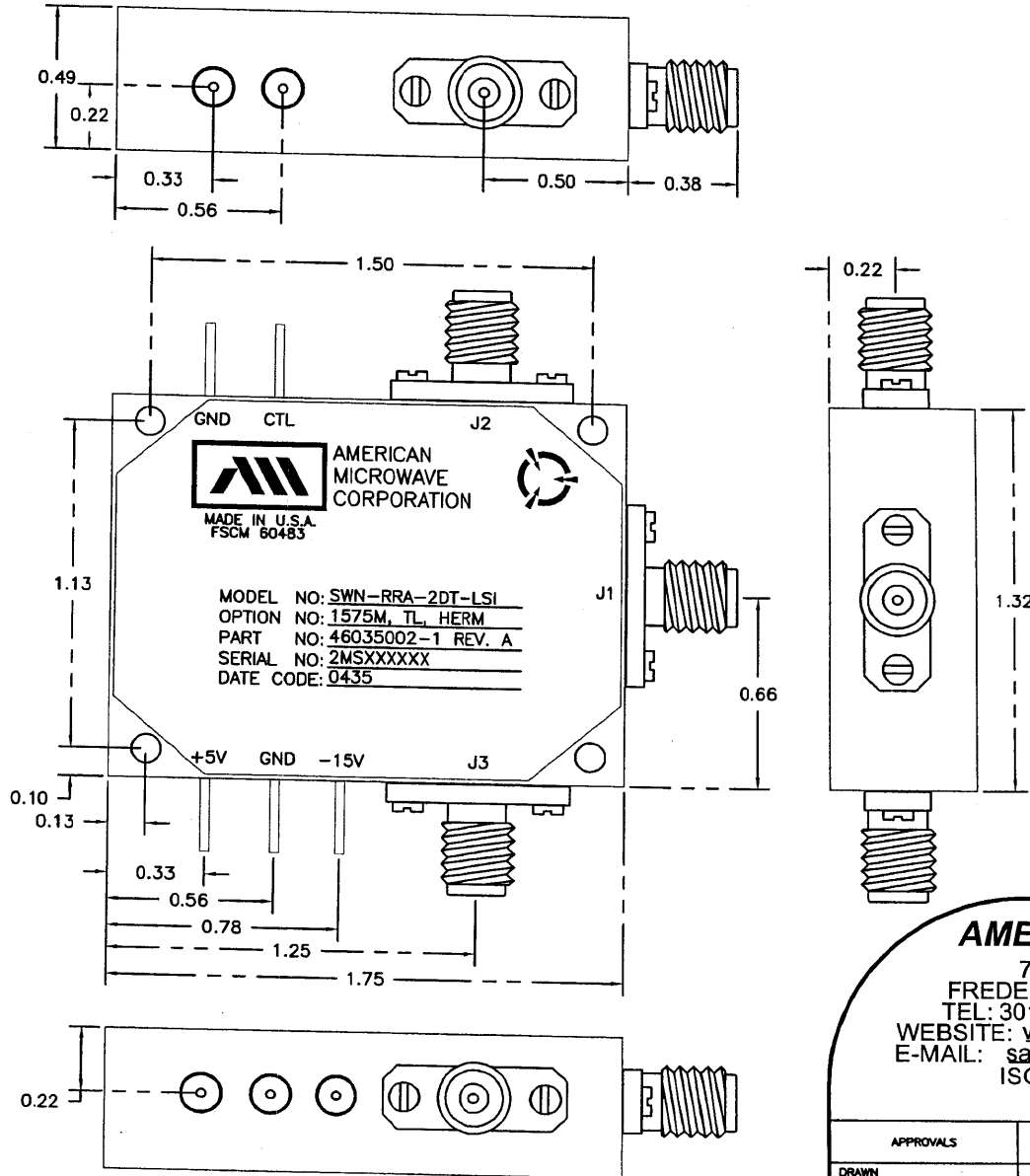


APPROVALS		DATE	TITLE		
DRAWN	GGJ	8/26/04	PRODUCT FEATURE SWN-FRA-2DT-LSI OPTION: 1575M, TL, HERM 1575.42 MHz, SINGLE POLE TWO THROW SWITCH		
CHECKED	PA	9/7/04	SIZE	FSCM NO.	DWG NO.
ISSUED			A	60483	100-7062
			SCALE	N:S	REV.
					-

DESCRIPTION

AMC MODEL SWN—RRA—2DT—LSI OPTION: 1575M, TL, HERM IS A HERMETICALLY SEALED, SINGLE POLE TWO THROW SWITCH DESIGNED TO OPERATE AT THE 1575.42 MHz FREQUENCY BAND WITH AN INSERTION LOSS OF < 2.0 dB AND AN ISOLATION OF > 40 dB. THE SIZE IS 1.75"(L) x 1.32"(W) x 0.49"(H).

REVISIONS				
ZONE	REV.	DESCRIPTION	DATE	APPROVED
	-	ORIGINAL RELEASE JOB# 407150E	8/26/04	



MECHANICAL OUTLINE

ALL DIMENSIONS ARE IN INCHES
 TOLERANCES:
 X.XX ±0.020
 X.XXX ±0.010

AMERICAN MICROWAVE CORPORATION

7311-G GROVE ROAD
 FREDERICK, MARYLAND 21704 USA
 TEL: 301-662-4700 FAX: 301-662-4938
 WEBSITE: www.americanmicrowavecorp.com
 E-MAIL: sales@americanmicrowavecorp.com
 ISO 9001:2000 CERTIFIED



APPROVALS		DATE	TITLE		
DRAWN	<i>JDJ</i>	8/26/04	MECHANICAL OUTLINE SWN-RRA-2DT-LSI OPTION: 1575M, TL, HERM 1575.42 MHz, SINGLE POLE TWO THROW SWITCH		
CHECKED	<i>PA</i>	9/7/04	SIZE	FSCM NO.	DWG NO.
ISSUED			A	60483	100-7062
			SCALE	N:S	SHEET 2 OF 3